



The all new ESU ReManufactured ARD HEAD!

**THE MOST ECONOMICAL AND BEST PERFORMING CHOICE AVAILABLE!**



Emissions Services Unlimited  
11633 Martens River Cr  
Fountain Valley, CA 92708  
(888) 550-9293  
[www.emissions-services.com](http://www.emissions-services.com)

**CONTACT US TODAY!  
INVENTORY IN STOCK!  
WE ARE HERE TO HELP!**  
[info@emissionservices.com](mailto:info@emissionservices.com)



# COMMON FAILURES OF ARD HEADS



## ARD HEAD CORROSION AND SOOT BUILD

Over time the ARD HEAD becomes corroded on the exterior, and internally can become clogged with SOOT, FUEL SCALE, Etc. This blockage will eventually stop fuel flow completely, and can even begin to chemically bond to the internal components. The only true method to remove this build up is by chemical cleaning, and ultrasonic cleaning. or simply replacing the component.

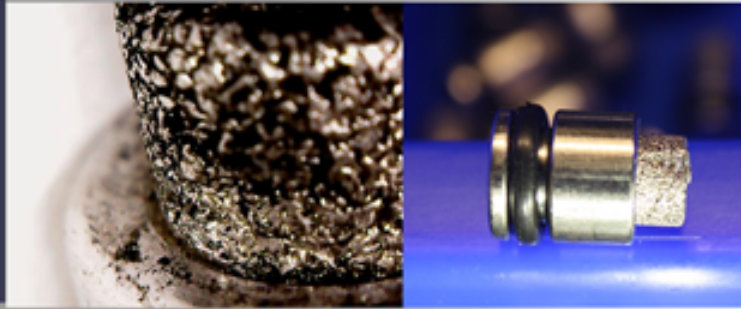


## ARD HEAD SPRAY PATTERN & FLOW

Over time the ARD HEAD "SPRAY NOZZLE" can become clogged, wear to a larger diameter, or otherwise become damaged. This NOZZLE controls much of the exhaust temperature during the regeneration process. In order for the diesel fuel to burn cleanly, the fuel needs to atomize into tiny droplets. ESU tests the spray pattern of every single ARD HEAD prior to sale.

## SINTERED SS FILTERS

The stainless steel sintered filters work well to filter contaminants from the diesel fuel. However, over time, microscopic contaminants lodge deep into the filter. While the filter may appear to be clean on the outside, debris remains internally.



## ARD HEAD MAINTENANCE ITEMS

It is very important that when you replace the ARD HEAD, that you also replace all suggested MAINTENANCE ITEMS. These items include the SPARK PLUG, the INLINE FILTERS, and all GASKETS required. In addition, it is equally important that the Fuel Lines be flushed out. Fuel Scale and other contaminants can build up in the Fuel Lines between the Engine and ARD HEAD.



## MAKE A SMART CHOICE

ESU ARD HEADS have the following advantages

- ▶ Every ARD HEAD is TESTED before leaving our facility, to ensure the part will work with 100% certainty (each ARD HEAD also has a "Certification Label" to ensure it passed all testing.
- ▶ ALL critical internal components are replaced with components that are within mfg. spec to ensure no pre-mature failures.
- ▶ ARD HEADS are prepared and packaged in a way that inhibits corrosion and other issues that arise from handling, storage, and shipping.
- ▶ Upon request ESU can also provide the ARD HEAD 'SPARK PLUG', "BASE GASKET", 'CGI Line GASKET', and 'CLEANING SOLUTION', as your one stop shop for all ARD HEAD items.

**30 DAY GUARANTEE!**  
**NO QUESTIONS ASKED WARRANTY**

